
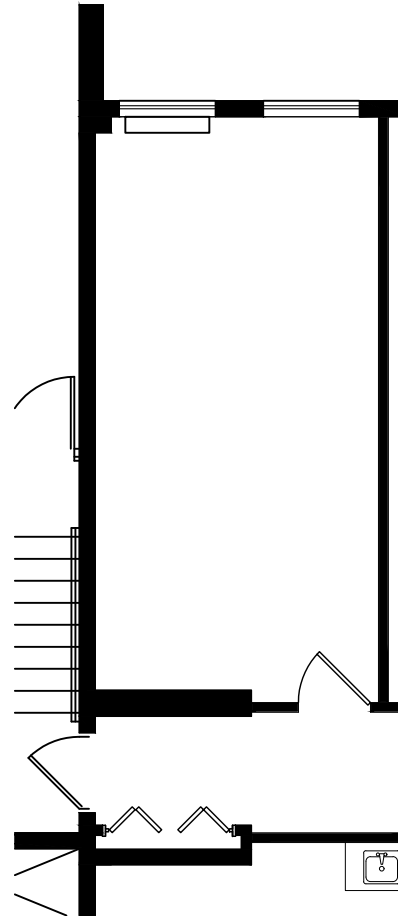


BOULEVARD 25 - 1805 South Bellaire Street

Scale: 1/8" = 1'-0"

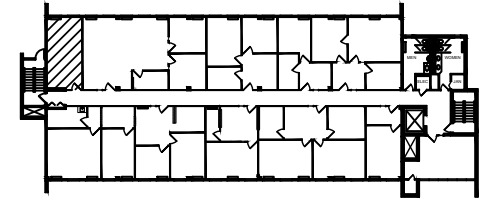
Level 2 

July 2, 2024



SUITE 295

365 SF



KEY PLAN

boulevard **25**



MATRIX
GROUP, INC.

Lauren Quiram, Director of Leasing
lquiram@matrixgroupinc.com
303-300-5271